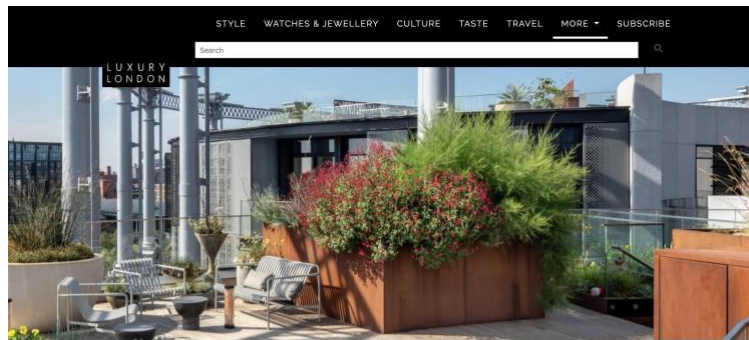


Luxury London (UK) 24th March 2020

The Best Home Gardens in London

[LINK](#)



Gasholders, Kings Cross

## The best home gardens in London

Spring is finally here and though we may not be able to roam as freely as before, these home gardens and outdoor spaces prove you don't have to go far to create a paradise of your own

### A spring terrace in Kings Cross

Kings Cross is one of the largest regeneration projects ever realised in a capital city. From **Coal Drops Yard** to the redevelopment of **Kings Cross Station**, demand for luxury homes in the area has also skyrocketed – cue the **Gasholders**. Designed by landscape architecture practice Dan Pearson Studio (which won gold at RHS Chelsea Flower Show), the Gasholders' resident rooftop mimics the mood of a meadow with a diverse mix of herbaceous perennials, grasses and bulbs to support and encourage pollinating insects.

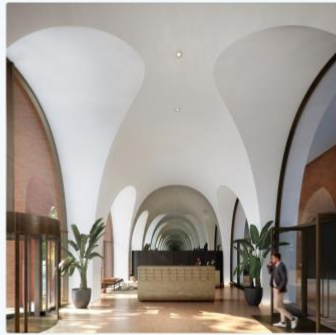




Apartments at Gasholders start from £745,000. [gasholderslondon.co.uk](http://gasholderslondon.co.uk)

**Cadence, an urban oasis**

Another development in the King's Cross area, Cadence has launched to market this month. A large courtyard with a private tranquility pool provides a sanctuary for residents to enjoy an alfresco lifestyle and escape the bustle of city life. Communal roof terraces across different levels of the building are adorned with greenery and offer far-reaching views across the city.



Prices for a two-bed apartment start from £1.15m. [cadencekingcross.co.uk](http://cadencekingcross.co.uk)

**An intimate courtyard garden at Twenty Grosvenor Square**

Thirteen years in the making, Finchatton's landmark development, Twenty Grosvenor Square is Mayfair's big boy on the block. Sitting opposite the old American embassy, it is the first standalone residential project with homeowners' services provided by Four Seasons - the latest, and arguably the most spectacular, example of the trend for luxury-branded homes. When all that pampering doesn't suffice, residents can retreat to the secluded courtyard, carefully curated with foliage and warm lighting for intimate evenings.



Prices for a four-bed property at Twenty Grosvenor Square start from £12gm. [20gs.com](http://20gs.com)

**Regent's Crescent Garden Villas**

Set behind one of London's most historic and iconic facades, The Garden Villas at Regent's Crescent are set amongst the one and a half acres of private landscaped gardens behind the Grade I Listed crescent. Tree ferns, sweet box and evergreen ferns provide a lush enclosure to this calm space - quite an achievement considering it's only a stone's throw away from the hustle and bustle of Oxford Circus.



Garden Villas at Regent's Crescent start from £5,350,000. [regentscrescent.com](http://regentscrescent.com)

*Dominic Jeffares*  
All articles by Dominic Jeffares