

# 9fi5th

LUXURY REAL ESTATE  
DESIGN + LIFESTYLE



COME  
SHOP  
AT  
HARRODS

+

OUR GUIDE TO  
**BARBADOS**  
WHAT \$125 MILLION  
WILL GET YOU TODAY

+

TAKING THE  
CULINARY DIVE AT  
**THE IVY**  
FROM BEGINNINGS  
TO CURRENT NIBBLES

## TOWERING ABOVE

ONE TOWER BRIDGE PROMISES MULTI-  
MILLION POUND VIEWS AND SO MUCH MORE

ANYONE'S  
BEST FRIEND  
**77 DIAMONDS**  
WITHOUT THE HEFTY PRICE TAG

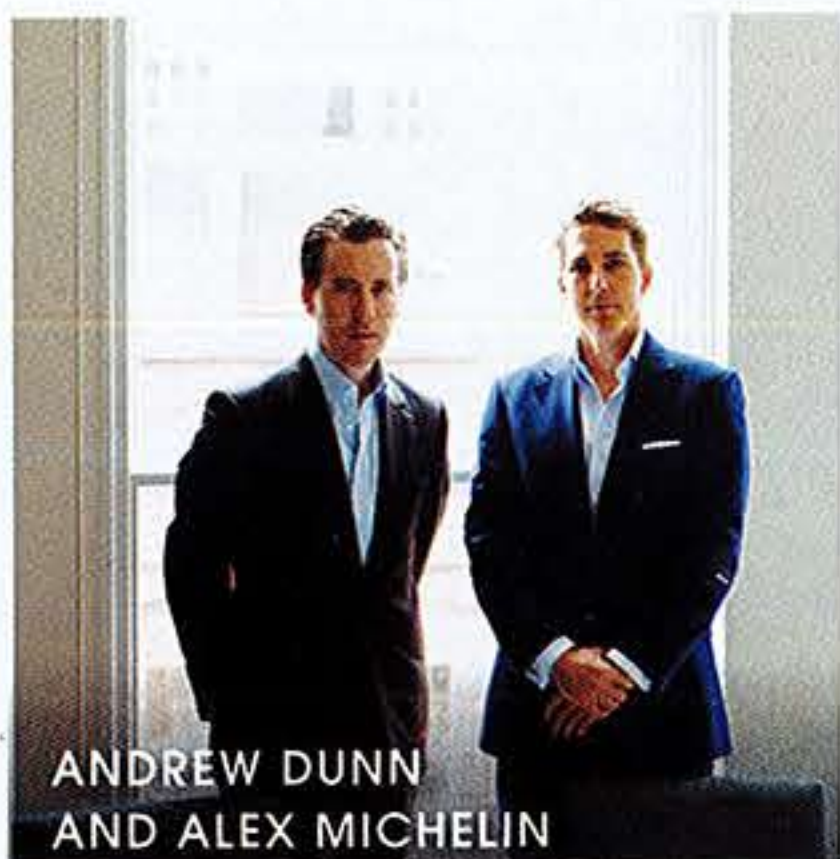


NORTHERN EUROPE



# FINCHATTON ON THE DETAILS

From bespoke private residences to elegant developments, Finchatton has spent 15 years redesigning and redefining every inch of what London knows as luxury living.



ANDREW DUNN  
AND ALEX MICHELIN

“Our aim is to create the most exceptional homes in the world,”

declared Finchatton Founder, Alex Michelin. These are lofty ambitions backed by brilliant architects, designers, and an awe-inspiring portfolio. For the last 15 years, Michelin and Co-Founder, Andrew Dunn, have fused fortitude and attention to detail to conjure up developments and private homes that have set the bar for luxury living. “When we hit the scene, London’s top-tier luxury developments felt tired. We decided to change all of that,” remembered Dunn.

What is the magic touch, you ask? Firstly, Finchatton offers it all. Superb design, first-rate materials, and carefully selected locations all aimed to deliver an experience. Take Finchatton’s forthcoming development, Knight’s House, one of two in Knightsbridge, which will blend a contemporary façade with an elegant, clean interior. With just three apartments ranging from 1,600 square feet to over 4,000 square feet, Knight’s House is destined to do Sir Lancelot proud. “We have a monolithic aesthetic that is both contemporary and timeless,” added Head Designer, Jiin Kim-Inoue. Visual elements like the Danish bricks and an intricate willow tree created from delicately



## PARTICULARS KNIGHTON PLACE

- PLACE** 📍 Knightsbridge
- PROPERTY** 🏠 5 Town homes
- PLANS** 📐 6,000 square feet
- PRICE** £ £3,850 per square foot
- PERIOD** 📅 Q3 of 2016
- PERKS** + Private parking, concierge, gardens, great views, private gyms



## ADDITIONS



KNIGHTON PLACE

### PARTICULARS KNIGHT'S HOUSE

PLACE	📍	Knightsbridge
PROPERTY	🏠	3 Residences
PLANS	📏	1,600 -4,450 square feet
PRICE	£	£3,900 per square foot
PERIOD	📅	2015
PERKS	+	Concierge, new build, parking, terraces

➔ Shopping? Harvey Nichols, Harrods... the choice is yours

massaged metal shapes are pure craftsmanship, a defining feature of all Finchatton projects.

If you are looking for even more space, Knighton Place may be right up your court. Knighton will boast five townhouses of no less than six stories and 6,000 square feet to stretch your legs in. These will be small castles fit for a king, queen, and their consort. "Knighton Place will have a car park, comprehensive amenities and tasteful, late-Georgian architecture," explained Michelin. The townhouses, like much of Finchatton's work, are likely to appeal to both British and international buyers. Design is sure to be a key selling point here and will provide visual inspiration and an exhibition of craft. The homes will be decked in the latest technol-

ogy, but all the buttons, screens and technology will not get in the way of the beautiful interiors or disrupt the design aesthetic.

It is not only slick moves that make Finchatton's properties exceptional, it is also smooth materials. "We are willing to go to the ends of the Earth for the correct marble," said Michelin, who sources stone from only the best Italian quarries. Because the Finchatton team enjoys perfecting details, they have done some amazing work in private residences. "When we undertake a private project, we start with a lengthy and often personal interview. We need to know everything about the client's life." And yes, it does get pretty personal - the team has been known to ask if clients are left-handed and even whether they fold or roll their underwear. That underwear question has, in fact, determined a critical number of millimetres that had to be added



ORCHID APARTMENT V, ALBANY, BAHAMAS

to a client's drawer. Sounds like the perfect, albeit intimate, touch.

"I interview the client's personal trainers, cooks, and housekeepers to aggregate details and design a home that fits their lives," Kim-Inoue said. And that is what buyers love about Finchatton. Just imagine every aspect of your home, from

kitchen shelves to bedroom lighting, tailored to you and your habits.

Are you 177.8 cm or 187.9 cm tall? Every centimetre makes a difference here. Bespoke luxury with an attention to detail is what Finchatton has mastered, be it in a London development or in a private home under the Caribbean sky.